

Seminar on Rail Transport between Europe and Asia

Accession to COTIF Procedure and Consequences

Stefan Schimming

Istanbul, 09 – 10 June 2009

OTIF



1

I. Assumptions

- Establishment of permanent or occasional cross border rail transport from countries of the region into one of the OTIF-Member States
(peripheral Member States of OTIF: Ukraine, Turkey, Iran;
short term perspective: Russian Federation, Jordan;
middle term perspective: Azerbaijan, Georgia, Pakistan, Saudi Arabia)
- Technical parameters and specifications (gauge, number of tracks, electrification, signalling, operational speed etc.) not significant;

OTIF



Consequences of COTIF-OTIF Membership

2

- Acceptance (including on the political level) of the
 - legal,
 - technical,
 - operational,
 - administrative and
 - financialprinciples of the Convention (COTIF 1999).



- Other rules and regulations which are important for considerations to accede are also internal regulations of OTIF as an International Governmental Organisation, eg.
 - staff regulations,
 - finance and account rules and
 - rules of procedures of the different OTIF-bodies.
- National accession procedures to COTIF/OTIF completed,
- Instrument of accession deposited with the Secretary General of OTIF,
- Accession procedure under article 37 COTIF 1999 completed.



II. Consequences/Challenges

- The role of a Member State of OTIF
 - full participation rights in the General Assembly and all committees other than the Administrative Committee
 - eligibility for the Administrative Committee
 - access to any advice and support provided by the Secretary General
 - access to parts of the OTIF website which are reserved for Member States

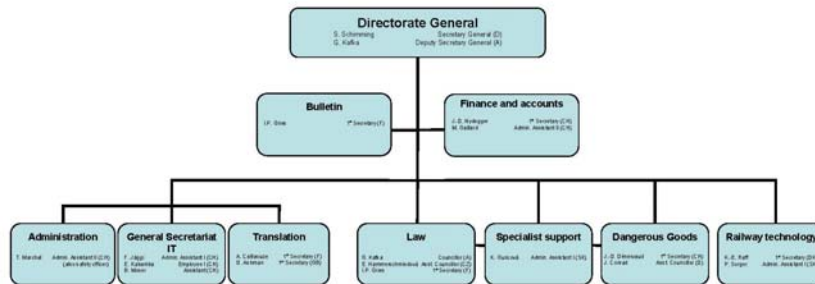


- With regard to the staff of the secretariat of the Organisation, there are no special rights for Member States
- the recruitment of staff members must strictly follow detailed qualification criteria, time-limited contracts 1,3 or 5 years, prolongations possible
- The qualifications necessary for a specific post to be filled are communicated to all Member States together with the recruitment announcement
- when posts in the secretariat have to be filled at international level, all Member States have the opportunity to present candidates
- Decisions about appointments are taken by the Administrative Committee upon a proposal of the Secretary General, by the Secretary General upon approval of the Administrative Committee or by the Secretary General alone
- The Secretary General has to be elected by the General Assembly.





INTERGOVERNMENTAL ORGANISATION FOR INTERNATIONAL CARRIAGE BY RAIL (OTIF)



Organigram (rev. 01.07.2008)

- obligation to pay Member State contributions (example calculated on the basis of dates for Azerbaijan)
- (2/5 UN = 0.005 %, railway lines = 1035 km, minimum contribution = 0.25 % = SFr. 7,799.- for 2009)
- obligation for advance payments for the current financial year



III. Commitment to the obligations of COTIF and its Appendices

- Unconditional in relation to an OTIF-Member State
- With regard to Member States of OTIF and OSJD in relation to agreements concerning the precedence of e.g. CIM over SMGS



- Article 3 COTIF

International cooperation

- Concentrate international cooperation in the railway field, in principle, within the framework of the Organisation
- Coherent with the tasks which are attributed to it in accordance with Articles 2 and 4

The question of loyalty in respect of this obligation relates to all Member States of OTIF which are also Member States of OSJD.



Knowledge, Experience, Contacts

- The status as an OTIF Member State will facilitate direct formal and informal contacts with every other individual Member State or group of Member States of OTIF.
- These contacts will result in easier access to the knowledge, experience and "best practices" of other Member States

